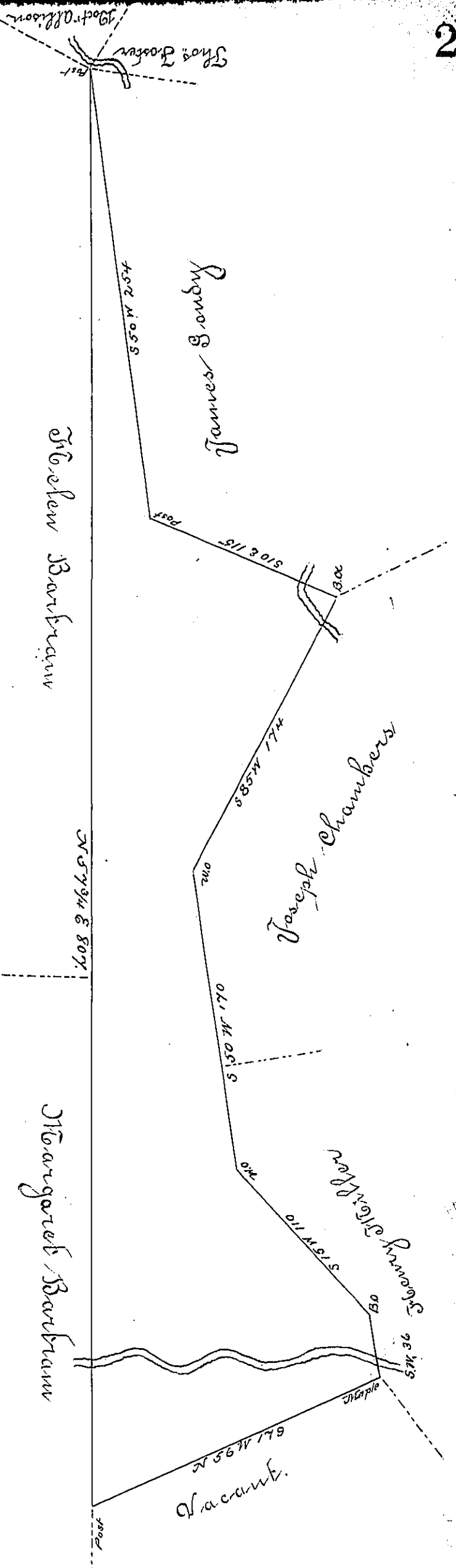


A Draught of a Tract of Land called Dundee, situate in Black Stile Bottom in the County of Northumberland. Surveyed the 22^d Day of August 1774 by Charles Bar-
 treem in pursuance of a Warrant Dated the 18th Day of June 1774 containing
 Three Hundred & thirty One Acres ^{at half an acre}, allow^d of 6 p. cent
 To John Lukens Esq.
 Surveyor General

Charles Lukens 19.5.



IN TESTIMONY that the above is a copy of the original remaining on file in the Department of Internal Affairs of Pennsylvania, made conformably to an Act of Assembly approved the 16th day of February, 1833, I have hereunto set my Hand and caused the Seal of said Department to be affixed at Harrisburg, this
 Twenty-first day of April 1891

Thos. J. Stewart
 Secretary of Internal Affairs